



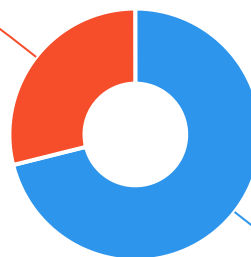
45*
reports

The Ageing & Disability Commission (ADC) received 45 reports related to allegations or concerns of abuse, neglect or exploitation of an older person or adult with disability from Shoalhaven in 2020*.

71%

of reports received in this LGA related to an older person.*

13 reports



32 reports

● Older person ● Adult with disability

Of reports relating to adults with disability*

38%

were female



53%

of reports about adults with disability were made by a paid worker^



Of reports relating to older people*

68%

were female



34%

of reports about older people came from a paid worker^

31%

of reports came from the adult child of the older person

9%

from the adult experiencing abuse themselves



1

report came from an adult who identified as **Aboriginal** or **Torres Strait Islander**~



1

report involved an adult who spoke a language other than English at home*

今日は!

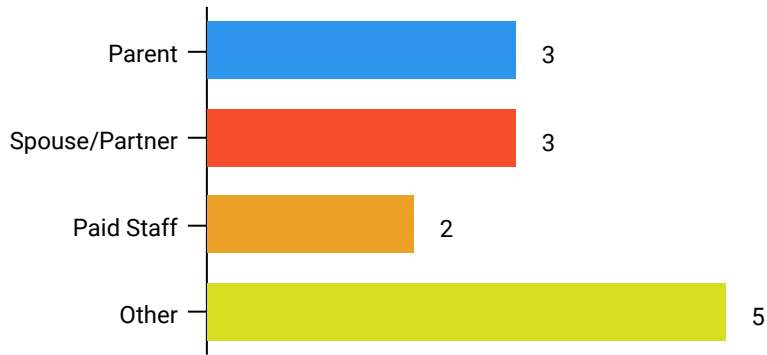


* Information taken from the Ageing & Disability Commission data collected between 1 January - 31 December 2020 where the location of the adult identified in the report was known.

^A paid worker is defined as a formal paid support, for example an NDIS support worker or CHSP support worker.

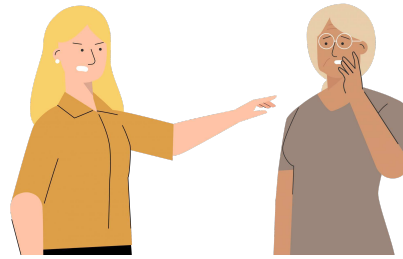
~ Adults who identify as Aboriginal or Torres Strait Islander and who are 50 years of age and over.

Reports about adults with disability **most commonly involved the parent or spouse/partner*** as the subject of allegation.



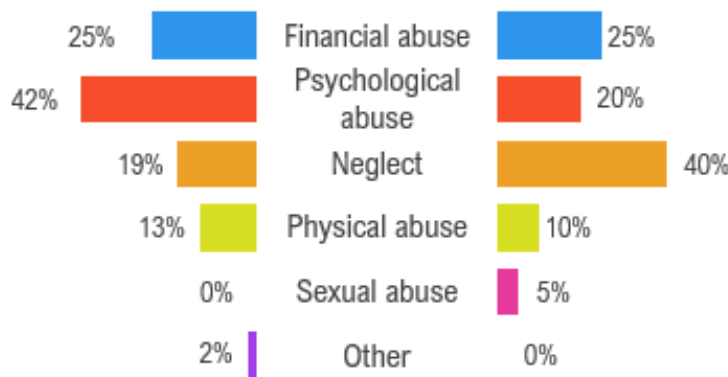
87%

of reports about older people involved family members, **mainly adult children** followed by the adults spouse or partner,* as the subject of allegation.



Older persons

The most commonly reported types of abuse towards older people were **verbal abuse, failure to meet support needs** and **theft (taking person's money)**.



The most commonly reported types of abuse towards adults with disability were **financial exploitation, withholding person's money** and **failure to meet support needs**.

What else do we know about the Shoalhaven community?

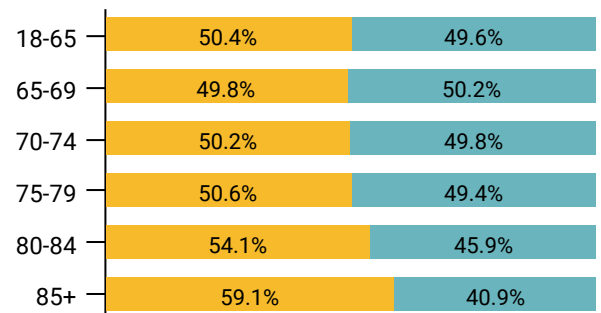
25%

of the population are over the age of 65¹



There are more women than men over the age of 85¹

● Female ● Male



69% of all households are

family households **28%** are single person households and **2%** are group households²



5.8%

of households speak a language other than English²



¹ The ADC classifies abuse into 5 broad categories, with a list of signs to indicate the type of alleged abuse reported.

¹ 2016 Population data by LGA data

² 2016 Census QuickStats, where group household refers to unrelated flatmate or co-tenancy arrangements