

Far West NSW

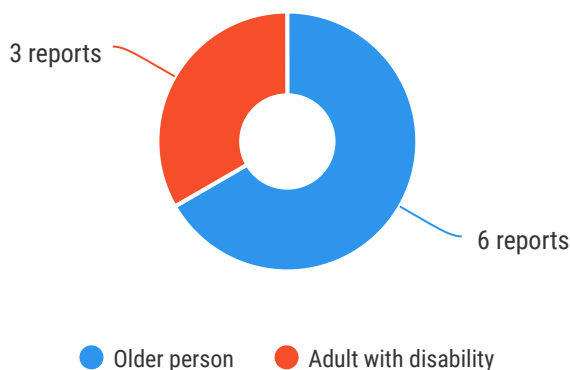
Central Darling, Wentworth & Broken Hill



The Ageing & Disability Commission (ADC) received 9 reports related to allegations or concerns of abuse, neglect or exploitation of an older person or adult with disability in **Far West NSW** in 2020*.

66%

of reports received in this region related to an older person.*



Of reports related to **adults with disability***

67%

were male



Of reports related to **older people***

67%

were male



100%

 of reports about **adults with disability** were made by a **paid worker**[^]

50%

 of reports about older people came from the **adult child** of the older person

16%

 of reports came from a **paid worker**[^]

33%

 from a friend of the adult

1

report came from an adult who identified as **Aboriginal or Torres Strait Islander**~



0

reports involved adults who spoke a language other than English at home

今日は!



* Information taken from the Ageing & Disability Commission data collected between 1 January - 31 December 2020 where the location of the adult identified in the report was known.

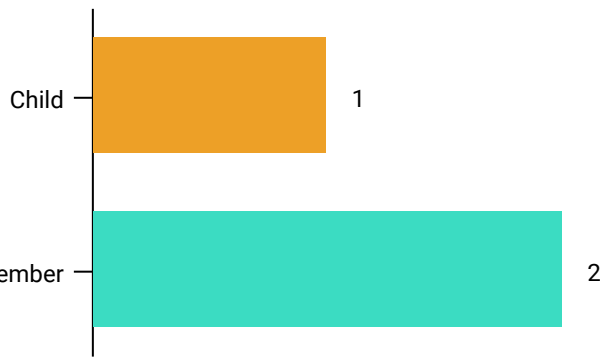
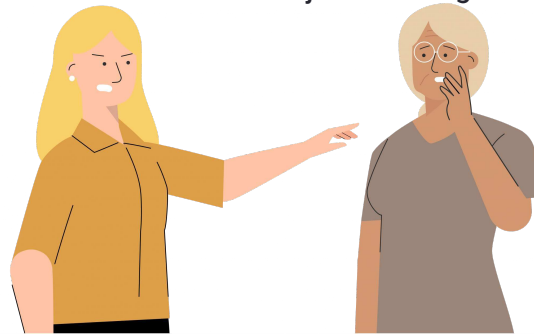
[^]A paid worker is defined as a formal paid support, for example an NDIS support worker or CHSP support worker.

~ Adults who identify as Aboriginal or Torres Strait Islander and who are 50 years of age and over.

Reports relating to abuse of an adult with disability most **commonly involved a paid support worker*** as the subject of allegation.

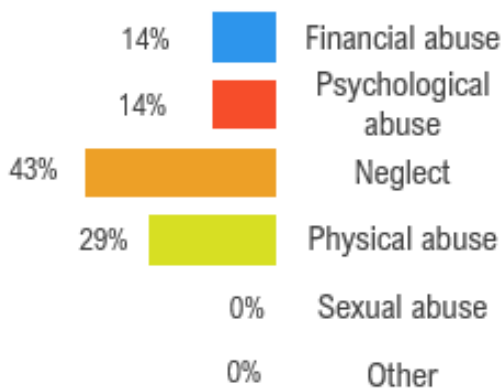
83%

of reports relating to older people involved family members, **mainly the partner and adult children**, as the subject of allegation*.



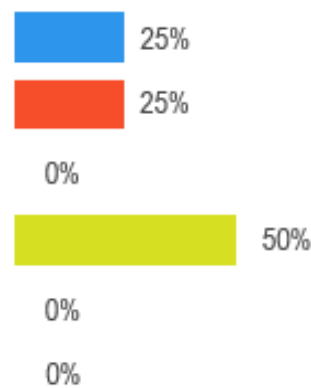
Older persons

The most commonly reported types of abuse towards older people were **verbal abuse**, **failure to meet support needs** and **financial exploitation**.



Adults with disability

The most commonly reported types of abuse towards adults with disability were **financial exploitation**, **verbal abuse** and **physical abuse (hitting, kicking or punching the adult)**.



What else do we know about the Far West of NSW?

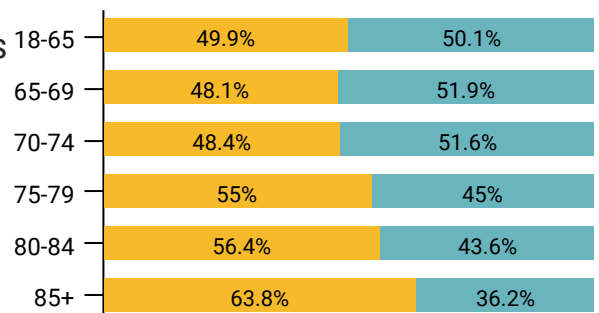
22%

of the population are over the age of 65.



The age splits across men and women are relatively even, with more women than men aged 85+.

● Female ● Male



64% of all households are

family households **33%** are single person households and **2%** are group households².



4.5%

of households speak a language other than English².



¹ The ADC classifies abuse into 5 broad categories, with a list of signs to indicate the type of alleged abuse reported.

² 2016 Population data by LGA

³ 2016 Census QuickStats, where group household refers to unrelated flatmate or co-tenancy arrangements