

Inner West



44*
reports

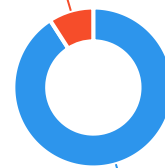


The Ageing & Disability Commission (ADC) received 44 reports related to allegations or concerns of abuse, neglect or exploitation of an older person or adult with disability from the **Inner West** in 2020*.

90%

of reports received in this LGA related to an older person.*

4 reports



40 reports

● Older person ● Adult with disability

Of reports relating to **adults with disability***

75%

were male



Of reports relating to **older people***

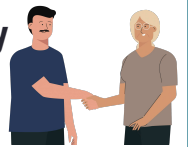
75%

were female



50%

of reports about **adults with disability** were made by **another family member**[^], mainly the adult child



32%

of reports about **older people** came from a **paid worker**[^]

17%

of reports came from the **adult child** of the older person

10%

from the adult experiencing abuse themselves



0

reports came from an adult who identified as **Aboriginal or Torres Strait Islander**~



6

reports involved an adult who spoke a language other than English at home, with **Greek** the most commonly reported language

今日は!



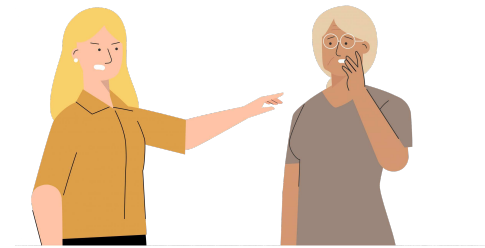
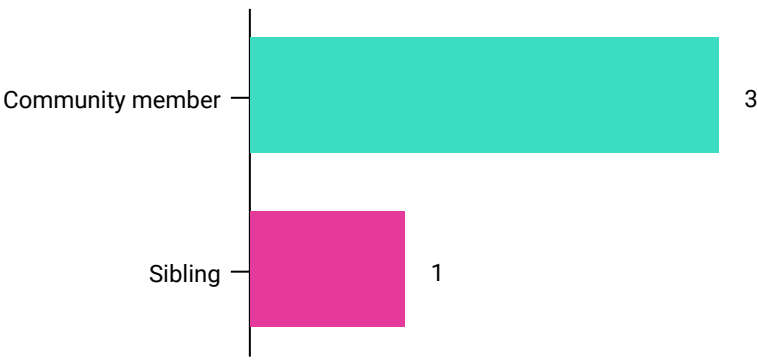
* Information taken from the Ageing & Disability Commission data collected between 1 January - 31 December 2020 where the location of the adult identified in the report was known.

[^]A paid worker is defined as a formal paid support, for example an NDIS support worker or CHSP support worker.

~ Adults who identify as Aboriginal or Torres Strait Islander and who are 50 years of age and over.

Reports about adults with disability most commonly involved a community support worker* as the subject of allegation.

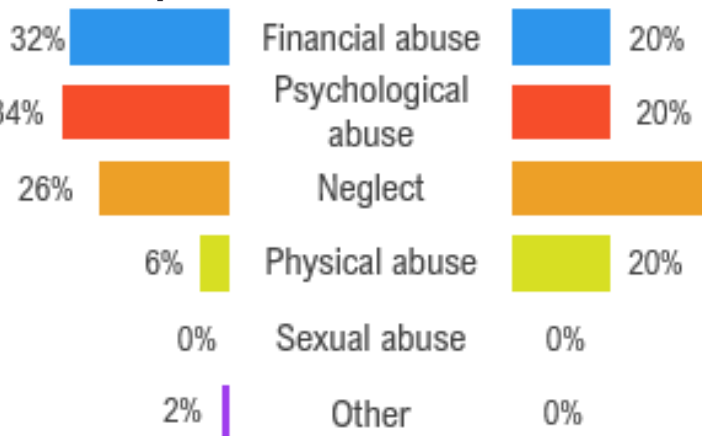
77% of reports about older people involved family members, mainly adult children*, followed by a member of their community as the subject of allegation.



Older persons

Adults with disability

The most commonly reported types of abuse towards older people were verbal abuse, failure to meet medical needs and misuse of power of attorney.



The most commonly reported types of abuse towards adults with disability were failure to meet support needs, verbal abuse and hitting or punching.

What else do we know about the Inner West community?

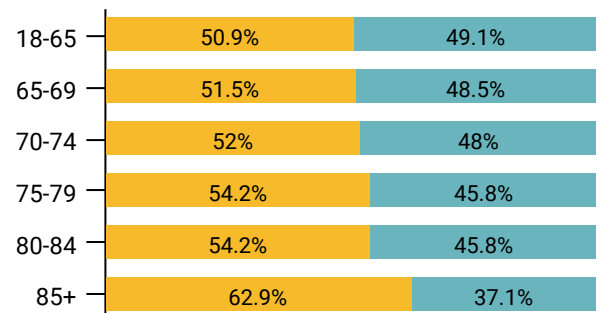
11%

of the population are over the age of 65.



There are more women than men over the age of 85.

● Female ● Male



63% of all households are

family households
27.5% are single person households and 9% are group households²

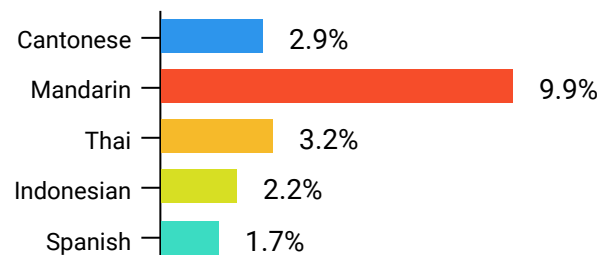


36%

of households speak a language other than English²



The most common language spoken at home is Mandarin²



¹ The ADC classifies abuse into 5 broad categories, with a list of signs to indicate the type of alleged abuse reported.

² 2016 Population data by LGA

³ 2016 Census QuickStats, where group household refers to unrelated flatmate or co-tenancy arrangements