

# Mid North Coast

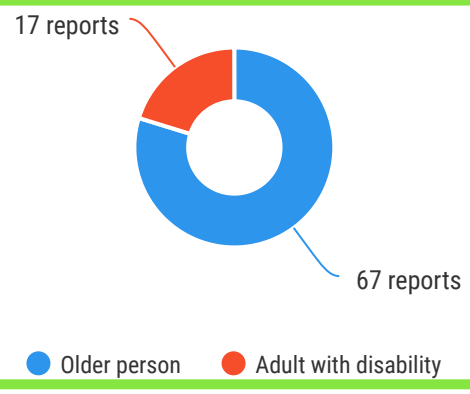
Bellingen, Coffs Harbour, Kempsey, Nambucca Valley



The Ageing & Disability Commission (ADC) received 84 reports related to allegations or concerns of abuse, neglect or exploitation of an older person or adult with disability across **Bellingen, Coffs Harbour, Kempsey & Nambucca Valley** in 2020\*.

## 79%

of reports received in this region related to an older person.\*



Of reports related to **adults with disability\***

## 53%

were male



Of reports related to **older people\***

## 59%

were female



## 82%

of reports about **adults with disability** were made by a **paid worker<sup>A</sup>** followed by the person experiencing abuse



## 23%

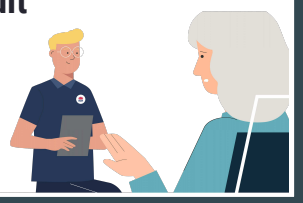
of reports about **older people** came from a **paid worker<sup>A</sup>**

## 32%

of reports came from the **adult child** of the older person

## 16%

from the adult experiencing abuse themselves



## 3

reports came from adults who identified as **Aboriginal or Torres Strait Islander~**



## 0

reports involved adults who spoke a language other than English at home

今日は!



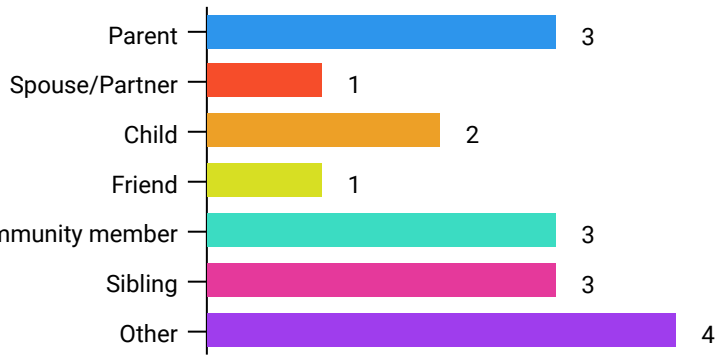
\* Information taken from the Ageing & Disability Commission data collected between 1 January - 31 December 2020 where the location of the adult identified in the report was known.

<sup>A</sup>A paid worker is defined as a formal paid support, for example an NDIS support worker or CHSP support worker.

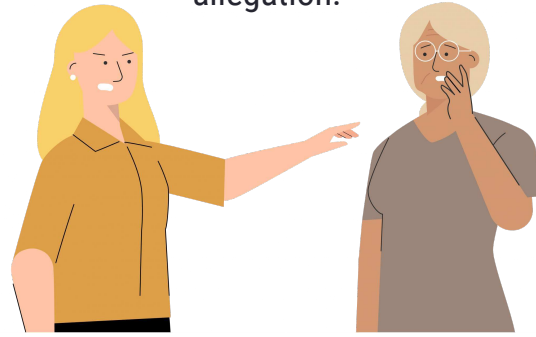
~ Adults who identify as Aboriginal or Torres Strait Islander and who are 50 years of age and over.



Reports about adults with disability most **commonly involved a parent or relative\*** as the subject of allegation.

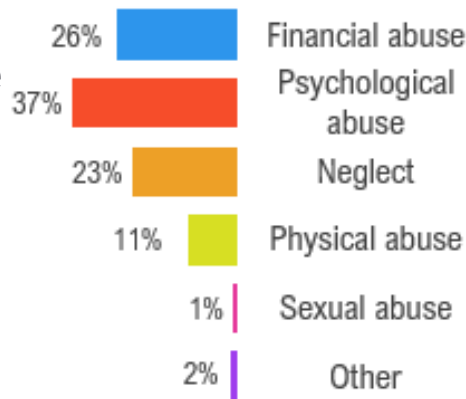


**79%** of reports about older people involved family members, **mainly adult children\***, as the subject of allegation.



### Older persons

The most commonly reported types of abuse towards older people were **verbal abuse and preventing access to family and friends, failure to meet support needs** and **financial exploitation**.



### Adults with disability

The most commonly reported types of abuse towards adults with disability were **financial exploitation, making excessive or degrading demands** and **failure to meet support and medical needs**.

## What else do we know about the Mid North Coast?

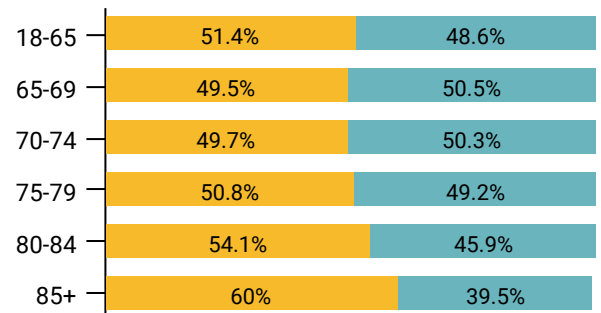
**23%**

of the population are over the age of 65.



There are more women than men over the age of 85, but younger age groups are evenly spread

● Female ● Male



**67%** of all households are

family households **29%** are single person households and **3%** are group households<sup>2</sup>



**3.7%**

of households speak a language other than English<sup>2</sup>



<sup>1</sup> The ADC classifies abuse into 5 broad categories, with a list of signs to indicate the type of alleged abuse reported.

<sup>2</sup> 2016 [Population data by LGA](#)

<sup>3</sup> 2016 [Census QuickStats](#), where group household refers to unrelated flatmate or co-tenancy arrangements