

# Murrumbidgee

Albury, Berrigan, Bland, Carrathool, Coolamon, Cootamundra-Gundagai region, Greater Hume Shire, Griffith, Hay, Junee, Leeton, Lockhart, Narrandera, Temora & Federation.

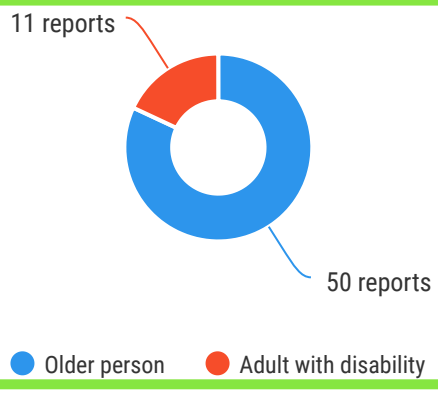


61\* reports

The Ageing & Disability Commission (ADC) received 61 reports related to allegations or concerns of abuse, neglect or exploitation of an older person or adult with disability across the **Murrumbidgee region** (excluding Wagga Wagga) in 2020\*.

81%

of reports received in this region related to an older person.\*



Of reports related to **adults with disability\***

81%

were female



Of reports related to **older people\***

60%

were female



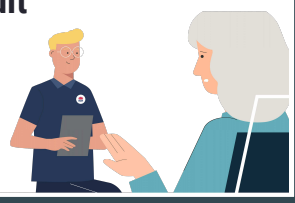
54% of reports about **adults with disability** were made by a **paid worker**<sup>^</sup>



42% of reports about **older people** came from a **paid worker**<sup>^</sup>

30% of reports came from the **adult child** of the older person

6% from the adult experiencing abuse themselves



1

report came from an adult who identified as **Aboriginal or Torres Strait Islander**~



3

reports involved adults who spoke a language other than English at home, with **German** the most commonly reported language

今日は!



\* Information taken from the Ageing & Disability Commission data collected between 1 January - 31 December 2020 where the location of the adult identified in the report was known.

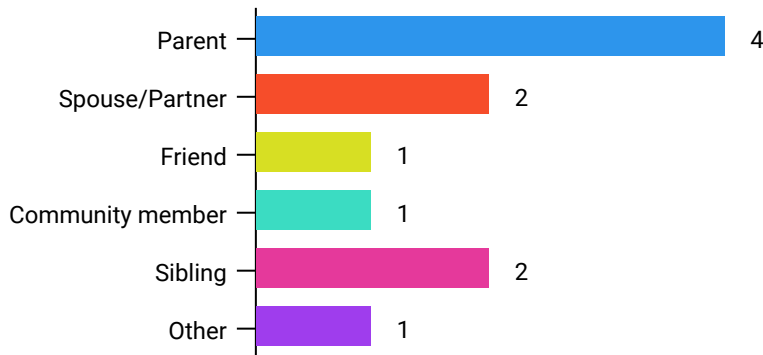
<sup>^</sup>A paid worker is defined as a formal paid support, for example an NDIS support worker or CHSP support worker.

~ Adults who identify as Aboriginal or Torres Strait Islander and who are 50 years of age and over.



Reports about adults with disability most **commonly involved the parent\*** as the subject of allegation.

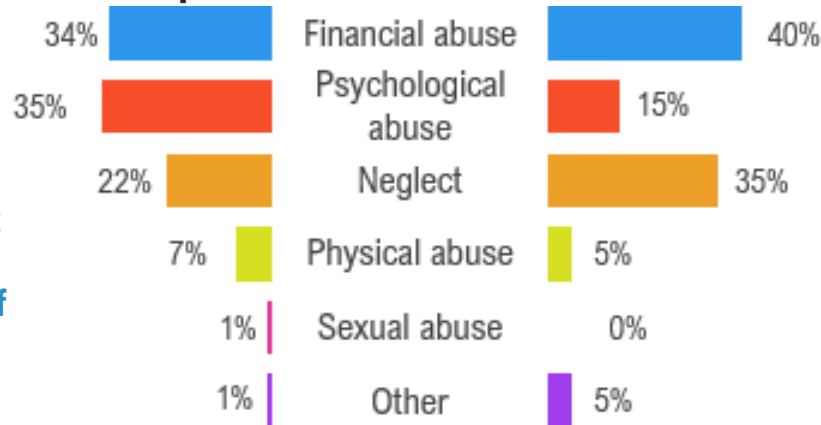
**90%** of reports about older people involved family members, **mainly adult children**, as the subject of allegation\*.



### Older persons

### Adults with disability

The most commonly reported type of abuse towards older people were **verbal abuse**, **failure to meet support needs** and **misuse of power of attorney or enduring power of attorney**.



The most commonly reported type of abuse towards adults with disability were **financial exploitation**, **restricting access to family and community** and **failure to meet support needs**.

## What else do we know about the Murrumbidgee region?

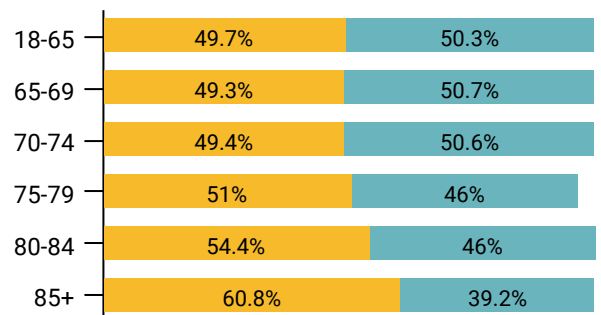
**20%**

of the population are over the age of 65.



There are more women than men over the age of 85, but younger age groups are evenly spread

● Female ● Male



**66%** of all households are

family households **30%** are single person households and **3%** are group households<sup>2</sup>



**6.4%**

of households speak a language other than English<sup>2</sup>



\* The ADC classifies abuse into 5 broad categories, with a list of signs to indicate the type of alleged abuse reported.

<sup>1</sup> 2016 Population data by LGA

<sup>2</sup> 2016 Census QuickStats, where group household refers to unrelated flatmate or co-tenancy arrangements