

54*
reports

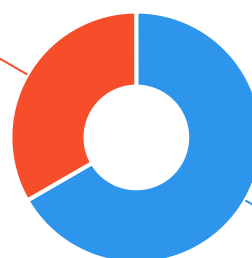


The Ageing & Disability Commission (ADC) received 54 reports related to allegations or concerns of abuse, neglect or exploitation of an older person or adult with disability from Penrith in 2020*.

66%

of reports received in this LGA related to an older person.*

18 reports



36 reports

● Older person ● Adult with disability

Of reports relating to adults with disability*

66%

were female



Of reports relating to older people*

75%

were female



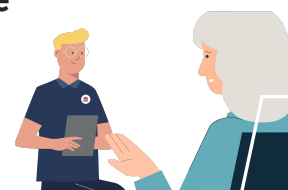
61% of reports about adults with disability were made by a paid worker^



33% of reports came from the adult child of the older person

27% of reports about older people came from a paid worker^

11% from a friend of the older person



1

report came from an adult who identified as Aboriginal or Torres Strait Islander~



9

reports involved an adult who spoke a language other than English at home with Maltese, Greek and Arabic* the most common languages reported

今日は!

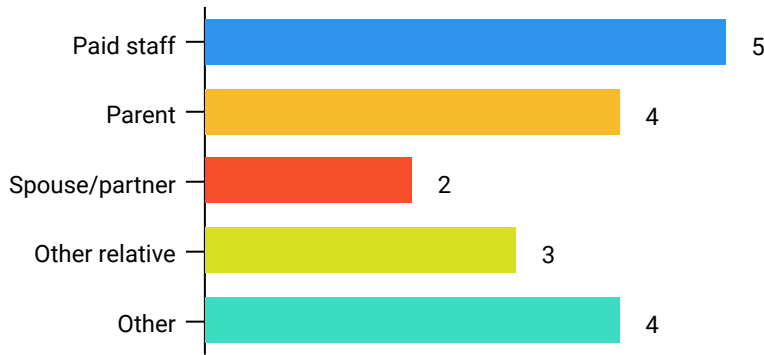


* Information taken from the Ageing & Disability Commission data collected between 1 January - 31 December 2020 where the location of the adult identified in the report was known.

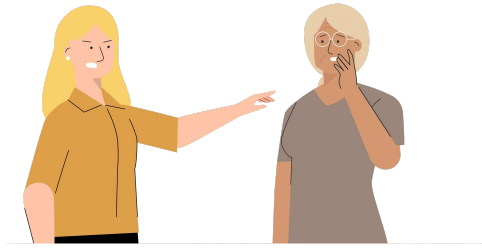
^A paid worker is defined as a formal paid support, for example an NDIS support worker or CHSP support worker.

~ Adults who identify as Aboriginal or Torres Strait Islander and who are 50 years of age and over.

Reports about adults with disability **most commonly involved paid staff and the parent*** as the subject of allegation.

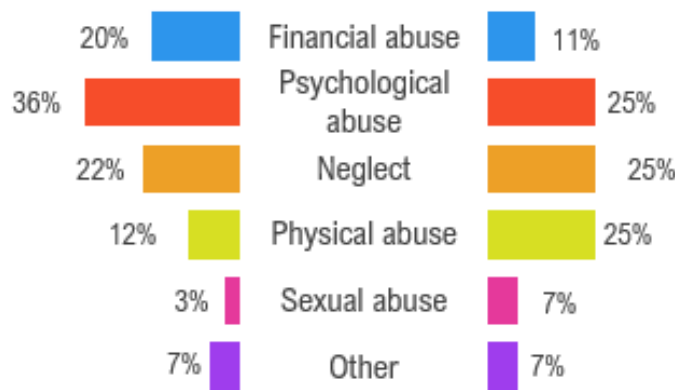


83% of reports about older people involved family members, **mainly adult children** followed by the adults spouse or partner,* as the subject of allegation.



Older persons

The most commonly reported types of abuse towards older people were **verbal abuse, restricting access to family/others** and **financial exploitation**.*



The most commonly reported types of abuse towards adults with disability were **verbal abuse, kicking/punching** and **neglect of medical care**.*

What else do we know about the Penrith community?

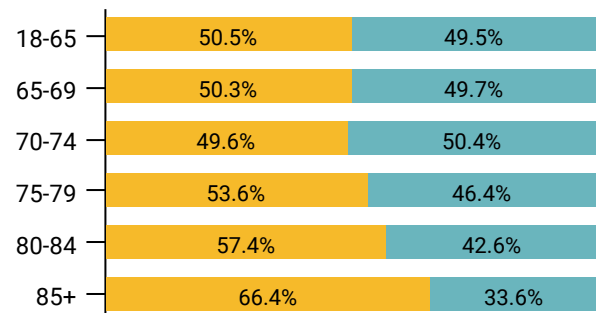
10%

of the population are over the age of 65¹



There are more women than men over the age of 85¹

● Female ● Male



78% of all households are

family households **19%** are single person households and **2%** are group households²

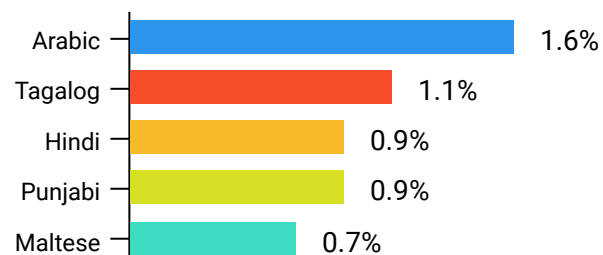


20%

of households speak a language other than English²



The most common language spoken at home is **Arabic**²



¹ The ADC classifies abuse into 5 broad categories, with a list of signs to indicate the type of alleged abuse reported.

² 2016 Population data by LGA data

² 2016 Census QuickStats, where group household refers to unrelated flatmate or co-tenancy arrangements