



33*
reports

The Ageing & Disability Commission (ADC) received 33 reports related to allegations or concerns of abuse, neglect or exploitation of an older person or adult with disability from **Randwick** in 2020*.

84%

of reports received in this LGA related to an older person.*

5 reports



28 reports

● Older person ● Adult with disability

Of reports relating to **adults with disability***

80%

were female



Of reports relating to **older people***

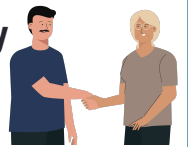
85%

were female



80%

of reports about **adults with disability** were made by a **paid worker[^]**, followed by the adult themselves



28%

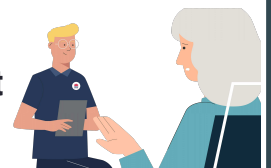
of reports about **older people** came from a **paid worker[^]**

21%

from the adult experiencing abuse themselves

14%

of reports came from the **adult child** of the older person



2

reports came from adults who identified as **Aboriginal** or **Torres Strait Islander**~



3

reports involved an adult who spoke a language other than English at home, with **Arabic** the only reported language

今日は!

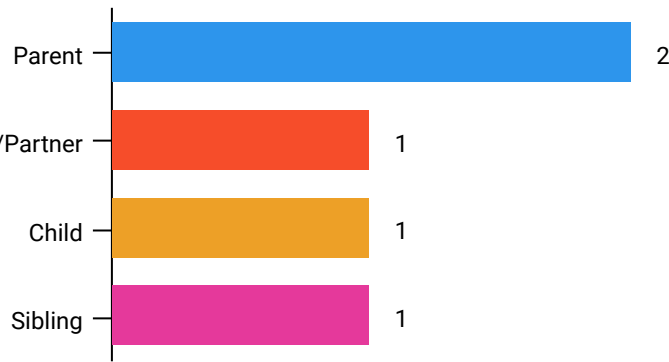


* Information taken from the Ageing & Disability Commission data collected between 1 January - 31 December 2020 where the location of the adult identified in the report was known.

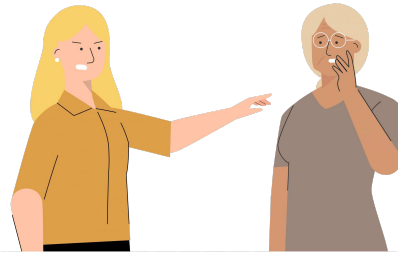
[^]A paid worker is defined as a formal paid support, for example an NDIS support worker or CHSP support worker.

~ Adults who identify as Aboriginal or Torres Strait Islander and who are 50 years of age and over.

Reports about adults with disability most **commonly involved the parent*** as the subject of allegation.

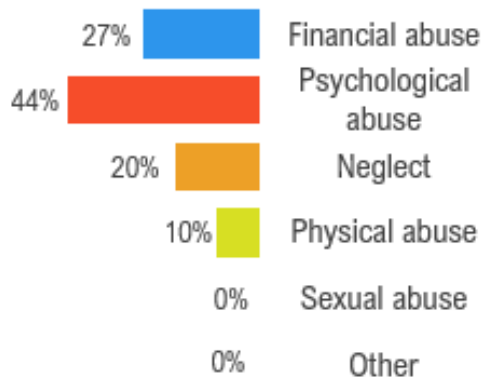


67% of reports about older people involved family members, **mainly adult children**, followed by paid support staff as the subject of allegation*.



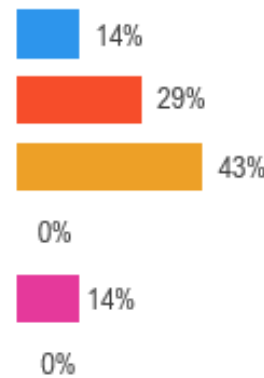
Older persons

The most commonly reported types of abuse towards older people were **psychological abuse**, **failure to meet medical needs** and **financial exploitation**.



Adults with disability

The most commonly reported types of abuse towards adults with disability were **failure to meet support needs**, **restricting access to support services** and **sexual exploitation**.



What else do we know about the Randwick community?

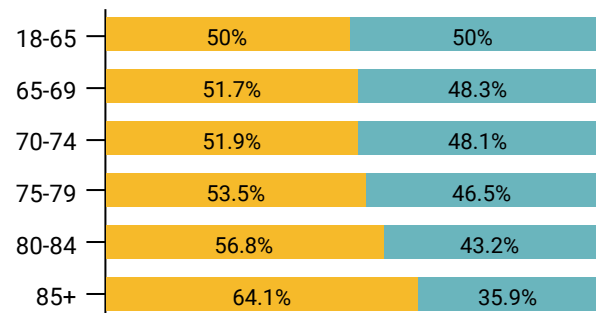
13%

of the population are over the age of 65¹



There are more women than men over the age of 85¹

● Female ● Male



63% of all households are

family households **26%** are single person households and **10%** are group households²

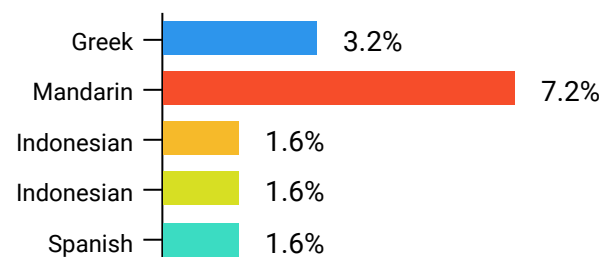


35%

of households speak a language other than English²



The most common language spoken at home is **Mandarin**²



¹ The ADC classifies abuse into 5 broad categories, with a list of signs to indicate the type of alleged abuse reported.

² 2016 Population data by LGA

³ 2016 Census QuickStats, where group household refers to unrelated flatmate or co-tenancy arrangements