



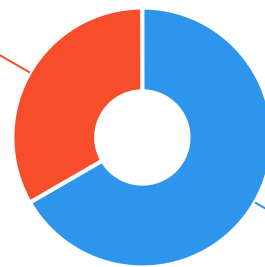
36*
reports

The Ageing & Disability Commission (ADC) received 36 reports related to allegations or concerns of abuse, neglect or exploitation of an older person or adult with disability from **Ryde** in 2020*.

60%

of reports received in this LGA related to an older person.*

12 reports



24 reports

● Older person ● Adult with disability

Of reports relating to **adults with disability***

58%

were male



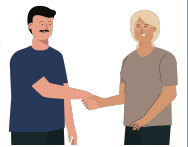
Of reports relating to **older people***

70%

were female



50% of reports about **adults with disability** were made by a **paid worker^**



29%

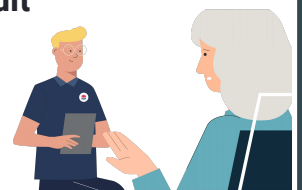
of reports about **older people** came from a **paid worker^**

20%

of reports came from the **adult child** of the older person

16%

from the adult experiencing abuse themselves



0

reports came from an adult who identified as **Aboriginal or Torres Strait Islander~**



4

reports involved an adult who spoke a language other than English at home, with **Greek** the most commonly reported language

今日は!



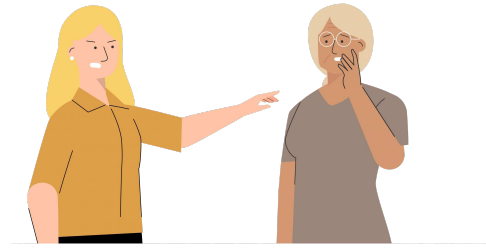
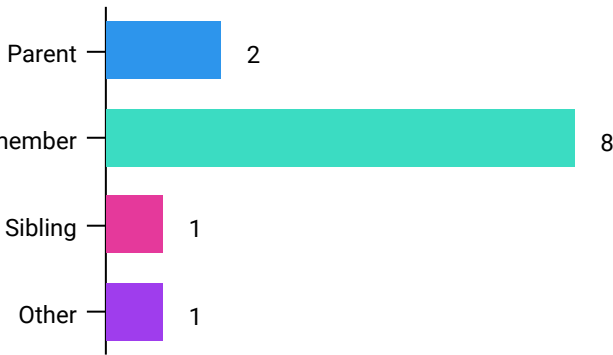
* Information taken from the Ageing & Disability Commission data collected between 1 January - 31 December 2020 where the location of the adult identified in the report was known.

^A paid worker is defined as a formal paid support, for example an NDIS support worker or CHSP support worker.

~ Adults who identify as Aboriginal or Torres Strait Islander and who are 50 years of age and over.

Reports about adults with disability most **commonly involved a paid community support worker*** as the subject of allegation.

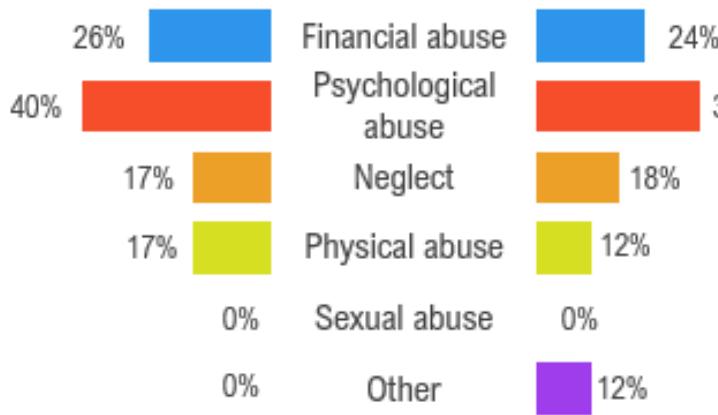
83% of reports relating to older people involved family members, **mainly adult children**, as the subject of allegation*.



Older persons

Adults with disability

The most commonly reported types of abuse towards older people were **verbal abuse**, **failure to meet medical needs** and **theft**.



The most commonly reported types of abuse towards adults with disability were **failure to meet support needs**, **verbal abuse** and **financial exploitation**.

What else do we know about the Ryde community?

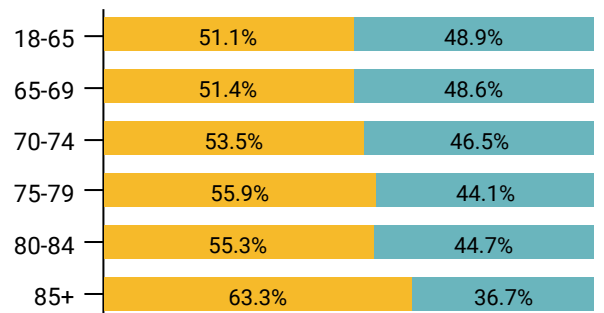
13%

of the population are over the age of 65₁



There are more women than men over the age of 85₁

● Female ● Male



71% of all households are

family households **23%** are single person households and **5%** are group households₂

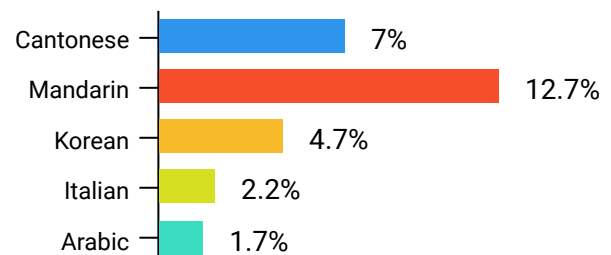


51%

of households speak a language other than English₂



The most common language spoken at home is **Mandarin**₂



¹ The ADC classifies abuse into 5 broad categories, with a list of signs to indicate the type of alleged abuse reported.

¹ 2016 [Population data by LGA](#)

² 2016 [Census QuickStats](#), where group household refers to unrelated flatmate or co-tenancy arrangements