

29*
reports

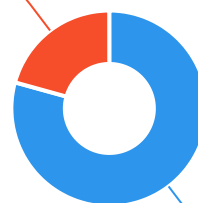


The Ageing & Disability Commission (ADC) received 29 reports related to allegations or concerns of abuse, neglect and exploitation of an older person or adult with disability from **Wagga Wagga** in 2020*.

79%

of reports received in this LGA related to an older person.*

6 reports



23 reports

● Older person ● Adult with disability

Of reports relating to **adults with disability***

50%

were female



Of reports relating to **older people***

73%

were female



83%

of reports about **adults with disability** were made by a **paid worker**[^]



47%

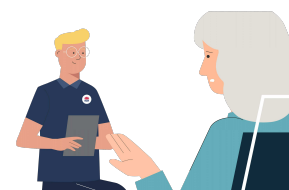
of reports about **older people** came from a **paid worker**[^]

26%

of reports came from the **child** of the older person

17%

from the adults **grandchild**



1

report came from an adult who identified as **Aboriginal** or **Torres Strait Islander**~



1

report involved an adult who spoke a language other than English at home

今日は!

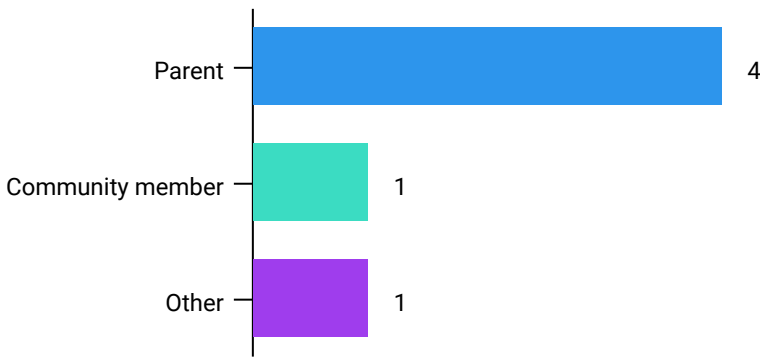


* Information taken from the Ageing & Disability Commission data collected between 1 January - 31 December 2020 where the location of the adult identified in the report was known.

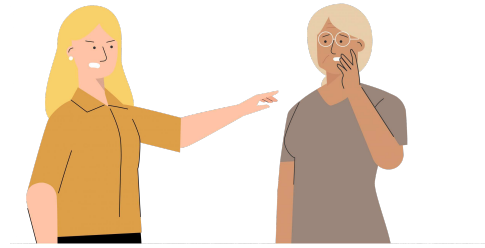
[^]A paid worker is defined as a formal paid support worker, for example an NDIS support worker or CHSP provider.

~ Adults who identify as Aboriginal or Torres Strait Islander and who are 50 years of age and over.

Reports about adults with disability **most commonly involved the parent*** as the subject of allegation.

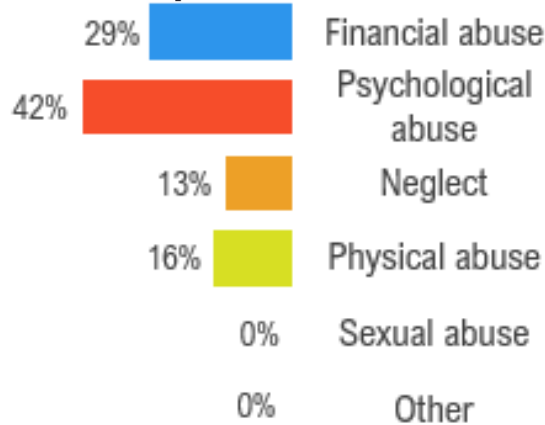


82% of reports about older people involved family members, **mainly adult children** followed by the adults spouse or partner,* as the subject of allegation.

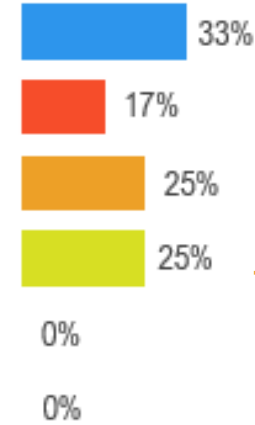


The most commonly reported types of abuse towards older people were **verbal abuse** and **financial exploitation/theft**.

Older persons



Adults with disability



The most commonly reported types of abuse towards adults with disability were **withholding person's money/theft** and a **failure to meet support needs**.

What else do we know about the Wagga Wagga community?

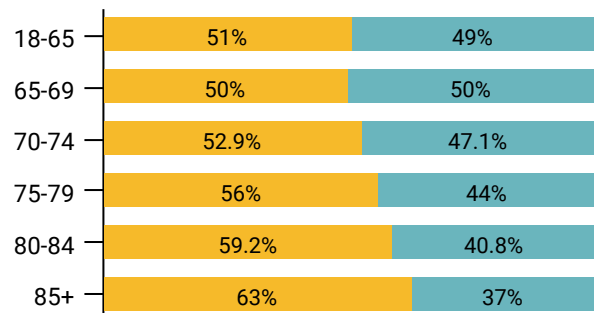
14%

of the population are over the age of 65.



There are more women than men over the age of 85.

● Female ● Male



69%

of all households are

family households **26%** are single person households and **4%** are group households²



7.6%

of households speak a language other than English²



¹ The ADC classifies abuse into 5 broad categories, with a list of signs to indicate the type of alleged abuse reported.

² 2016 Population data by LGA

³ 2016 Census QuickStats, where group household refers to unrelated flatmate or co-tenancy arrangements