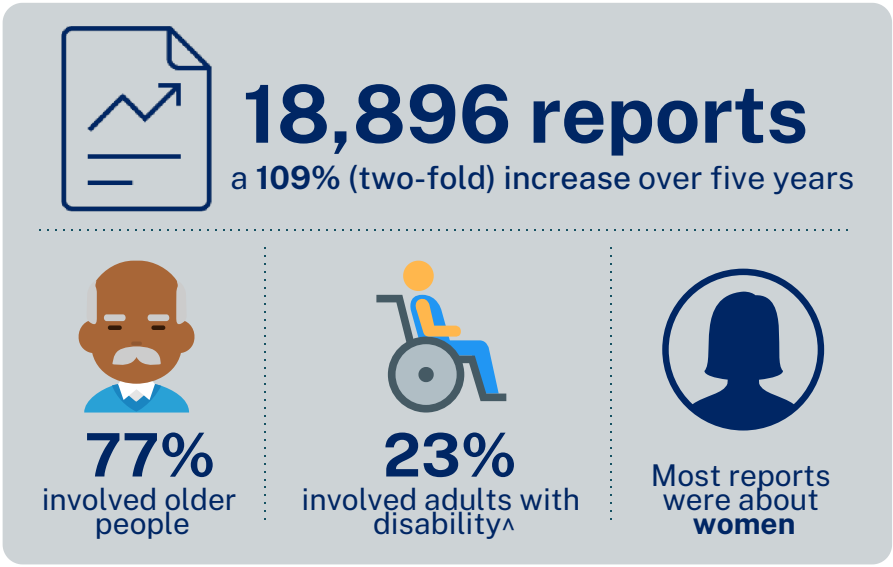


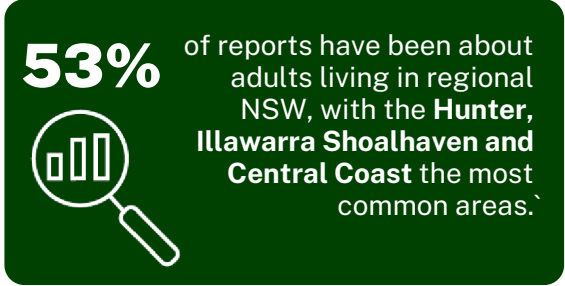
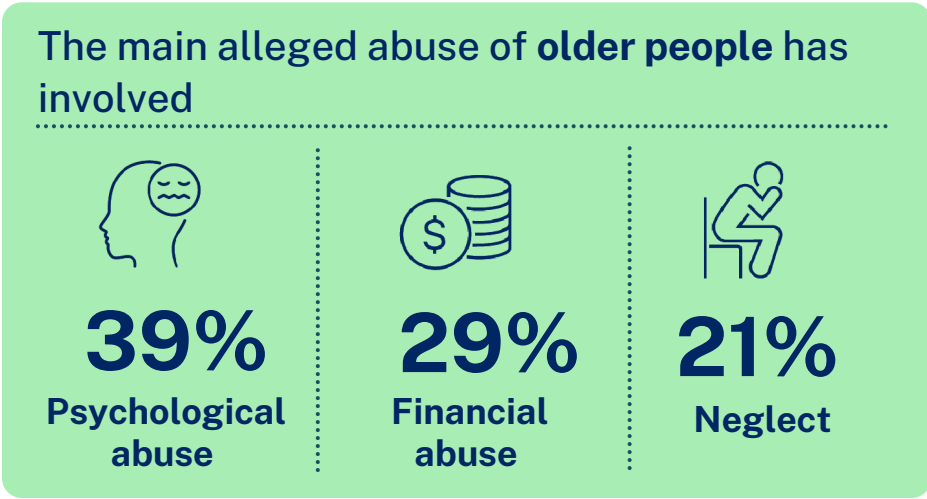
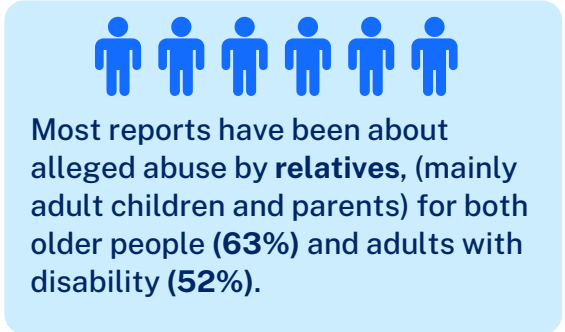
Ageing and Disability Commission

5 year data snapshot*

We act to prevent and respond to reports of abuse, neglect and exploitation of adults with disability and older people in their family, home and community



Paid workers have been the main reporters about **older people** and **adults with disability**.



*Data collected 1 July 2019 to 30 June 2024
[^]Who were not older people
[^]Where the location of the person was known
For more information and data visit ageingdisabilitycommission.nsw.gov.au

Ageing and Disability Commission

5 year data snapshot*

We act to prevent and respond to reports of abuse, neglect and exploitation of adults with disability and older people in their family, home and community

Key outcomes

We have directly assisted older people and adults with disability to:

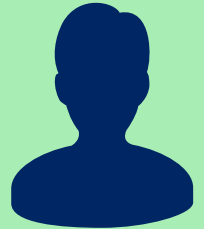
- Obtain necessary supports, including aged care (**411** people), legal (**328**), disability (**251**) and advocacy supports (**237**)
- Receive assistance or further actions from police (**370**)
- Move to safer accommodation (**323**)
- Access health services (**172**)



Key outcomes

In relation to subjects of allegation:

- **1,968** received education and advice
- **433** were assisted to receive more support
- **115** had an ADVO taken out against them
- **56** were removed as the Power of Attorney or Enduring Power of Attorney (EPOA)
- **53** were charged with criminal offences



The ADC ascertained the will and preference of **2,600** older people and adults with disability, including through **1,233** home visits across NSW.

332

community engagements across NSW supporting workers and the community to better detect and respond to abuse.



Over **11,600** users accessed our online training modules on identifying and responding to abuse, neglect and exploitation.



An increase to **19** abuse prevention Collaboratives that support and raise awareness of abuse in their local communities across NSW, including **11** regional areas.

OCV
Official Community Visitors

53% increase in 'visitable services' in the Official Community Visitor (OCV) scheme (2,160 to 3,311)

13,901 visits conducted by OCVs, an **11% increase** over 5 years

13,951 issues raised by OCVs, an **21% increase** over 5 years

*Data collected 1 July 2019 to 30 June 2024

^Who were not older people

^Where the location of the person was known

For more information and data visit ageinganddisabilitycommission.nsw.gov.au